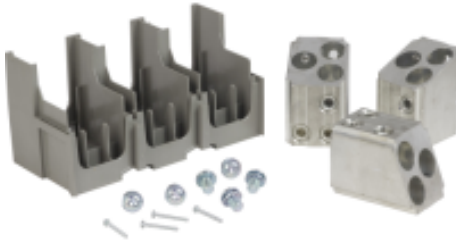




Price*: 1038.00 USD



Main

Range of product	PowerPact P
Product or component type	Mechanical lug
Accessory / separate part category	Connection accessory
Quantity per set	Set of 3
Circuit breaker type	P-frame

Complementary

Product compatibility	PowerPact P PowerPact
Line Rated Current	1200 A
Material	Aluminium
Mounting mode	Unit mount
Location of connection	Upstream Downstream
AWG gauge	AWG 3/0...600 kcmil aluminium/copper
Kcmil size	600 kcmil
Tightening torque	442.54 Lbf.In (50 N.m) 0.15...0.47 in ² (95...300 mm ²) (AWG 3/0...600 kcmil)

Environment

Product certifications	UL CSA
------------------------	-----------

Ordering and shipping details

Category	01250-M,P,R FRAME ACCESSORIES ONLY
Discount Schedule	DE2
GTIN	00785901654728
Package weight(Lbs)	6.00 Lb(US) (2.722 kg)
Returnability	Yes
Country of origin	US

Packing Units

Package 1 Height	5.50 In (13.970 cm)
Package 1 width	7.50 In (19.050 cm)
Package 1 Length	11.50 In (29.210 cm)

Offer Sustainability

Sustainable offer status	Green Premium product
California proposition 65	WARNING: Cancer and Reproductive Harm - www.P65Warnings.ca.gov
REACH Regulation	REACH Declaration
EU RoHS Directive	Pro-active compliance (Product out of EU RoHS legal scope) EU RoHS Declaration
Mercury free	Yes
RoHS exemption information	Yes
China RoHS Regulation	China RoHS Declaration
Environmental Disclosure	Product Environmental Profile
Circularity Profile	End Of Life Information
PVC free	Yes

Contractual warranty

Warranty	18 months
----------	-----------

Product Life Status : **Commercialised**